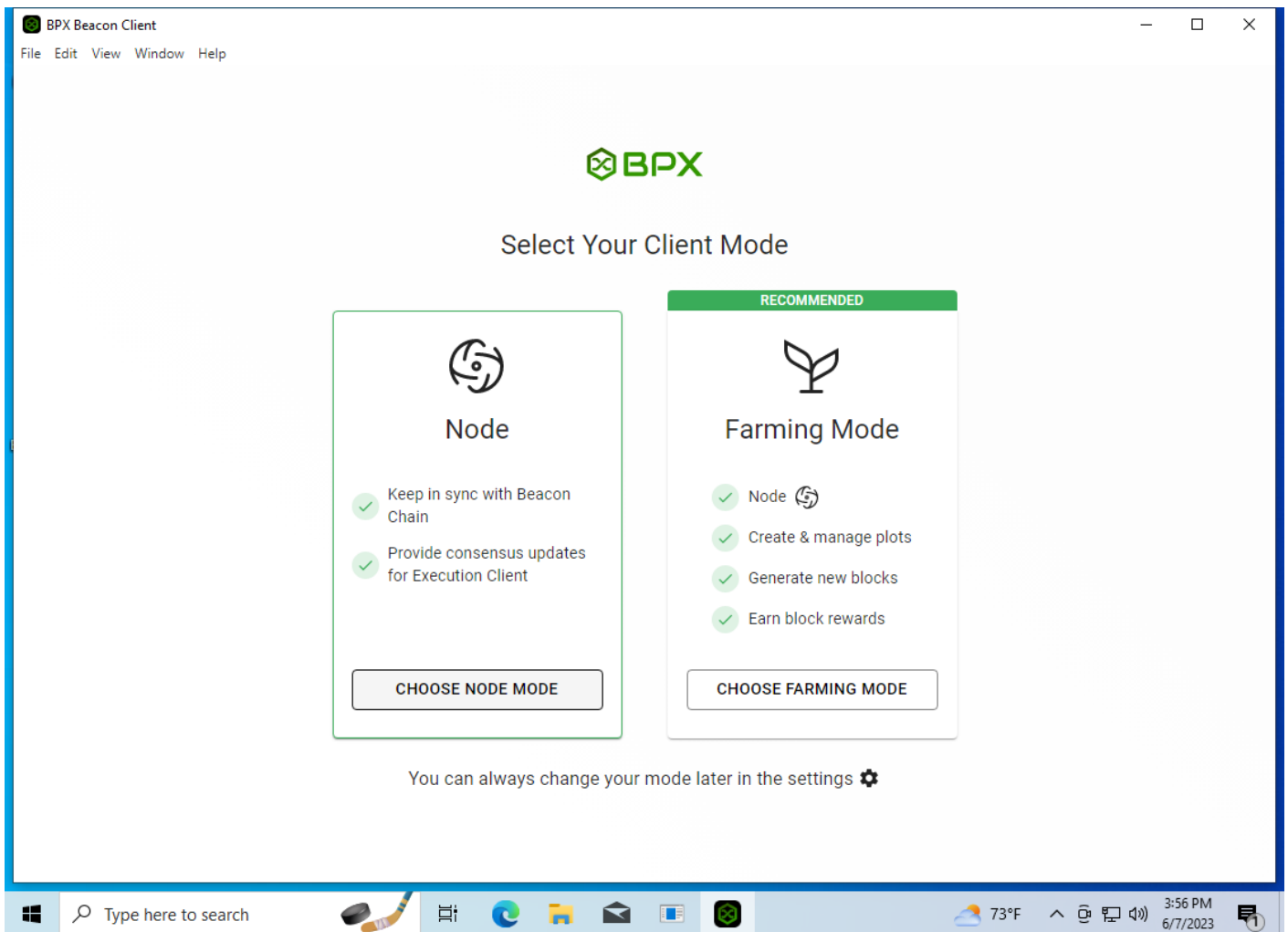


# Farming

- [Farming BPX on Windows](#)
- [Farming BPX on Debian / Ubuntu](#)

# Farming BPX on Windows

1. To start farming BPX, you need a fully synchronized full node. If you don't have one, [follow all the steps of this tutorial](#), but in the step shown in the screenshot below, choose the **Farming Mode** instead of **Node Mode**. Then, proceed directly to the **Step 4**.



2. If you already have a running full node, go to **Settings** and change the operating mode to **Farming**.



Beacon

## Beacon Client

Status ?

Synced

Connection Status

Connected

Network Name

mainnet

Peak Height

77,927

Last Block Time ?

June 8, 2023 11:10 AM

Difficulty

18

VDF Sub Slot Iterations

27,262,976

Total Iterations ?

58,972,370,675

Estimated Network Space ?

131.374 PiB

## Blocks

Search block by header hash



Header Hash	Height	Time Created	State
0x15b513d294a3eb75062cbf978bec7618b09f8cfdeb...		June 8, 2023 11:10 AM	Unfinished
0x6d1a38ba1260ac92b2e4969573ef29961b1e84f6cef...	77,927		Finished
0x9c499ce7cdb53b4cdd0b151faf852f75dfa73d9fe115...	77,926	June 8, 2023 11:10 AM	Finished

Activate Windows

Go to Settings to activate Windows.



Settings

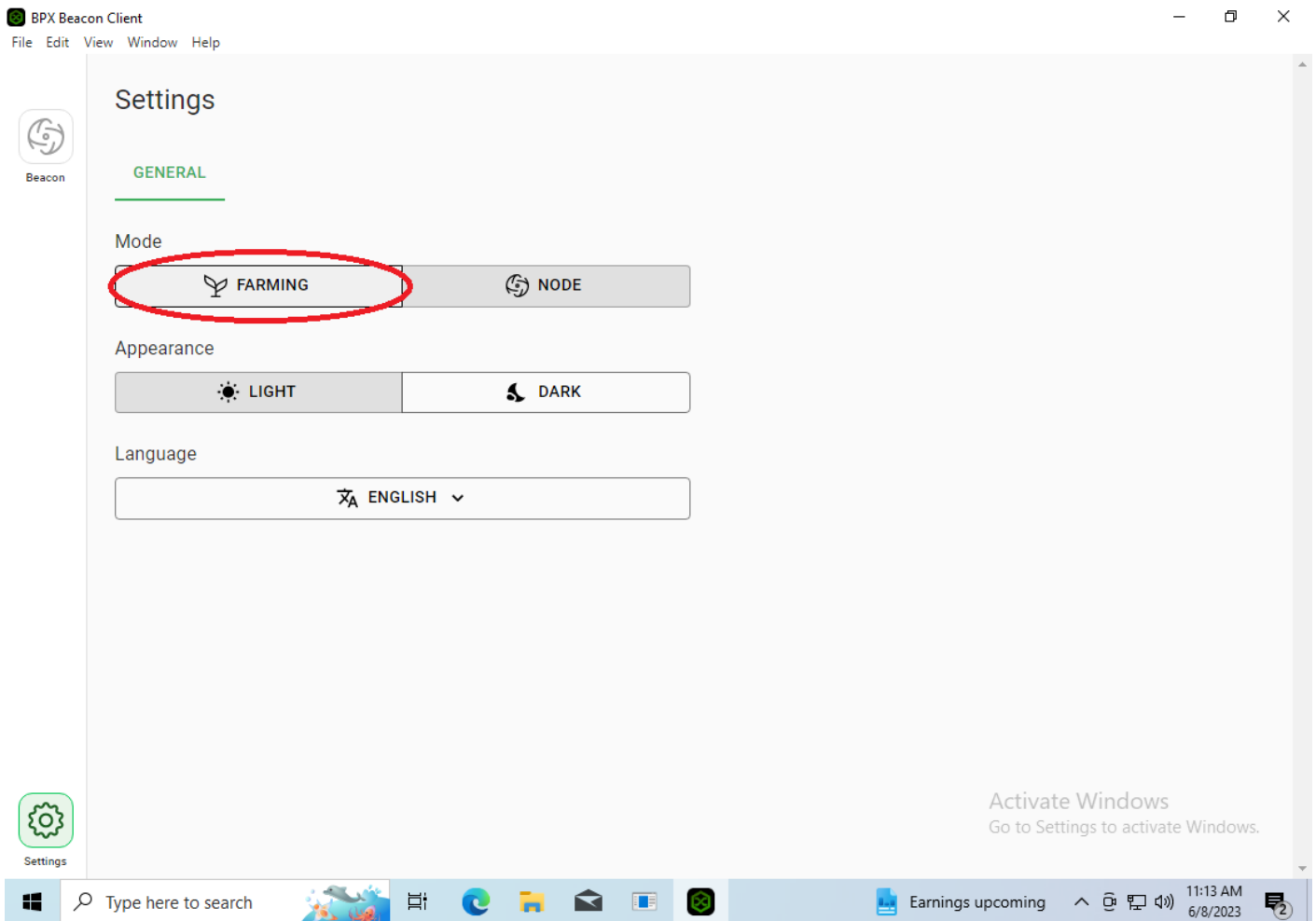


Type here to search



65°F Partly sunny

11:11 AM  
6/8/2023



3. Wait for the additional processes required for farming to start. Allow the Windows Firewall to open the required port, just like during the client installation.



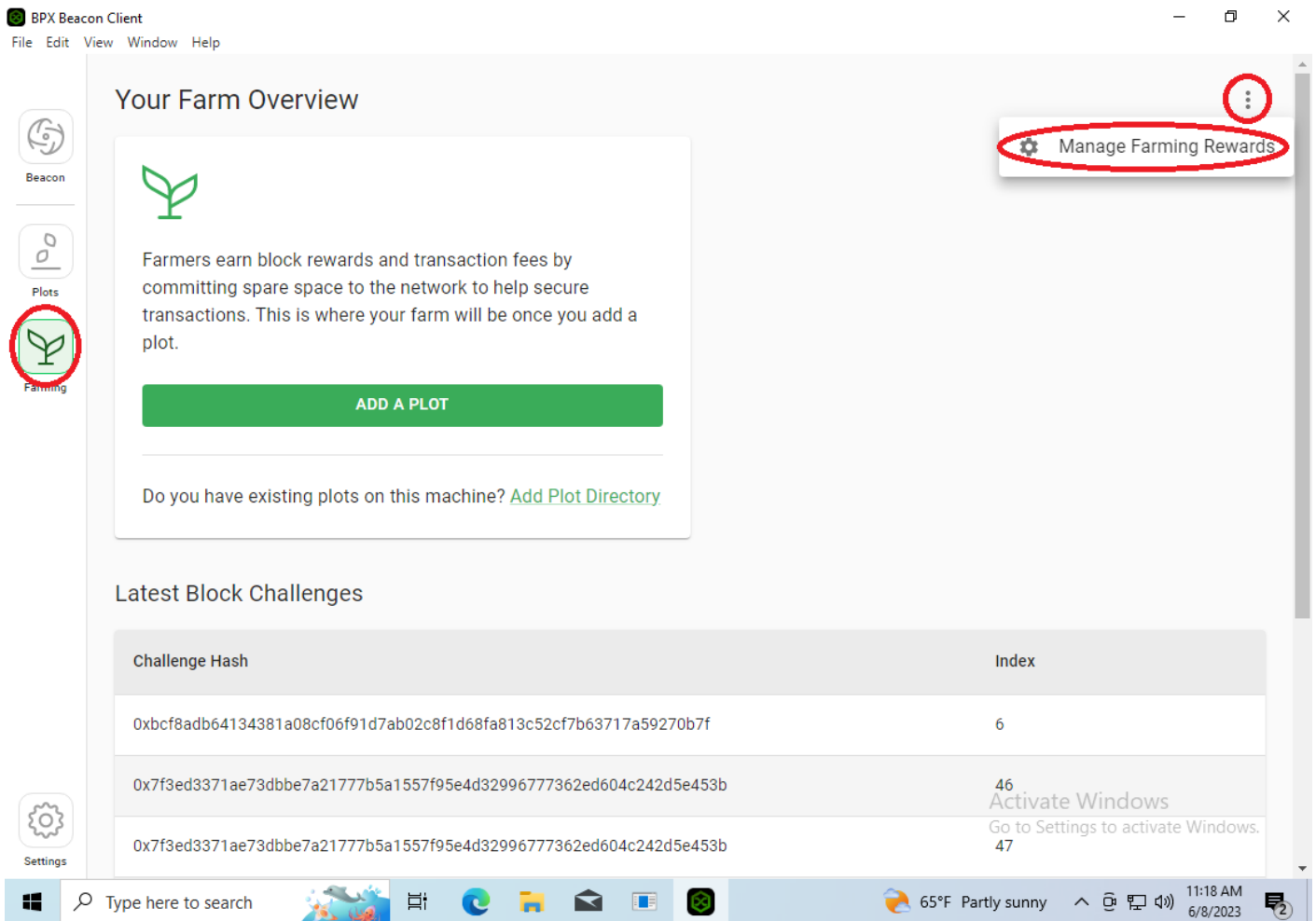
Starting services

Farmer  
Harvester

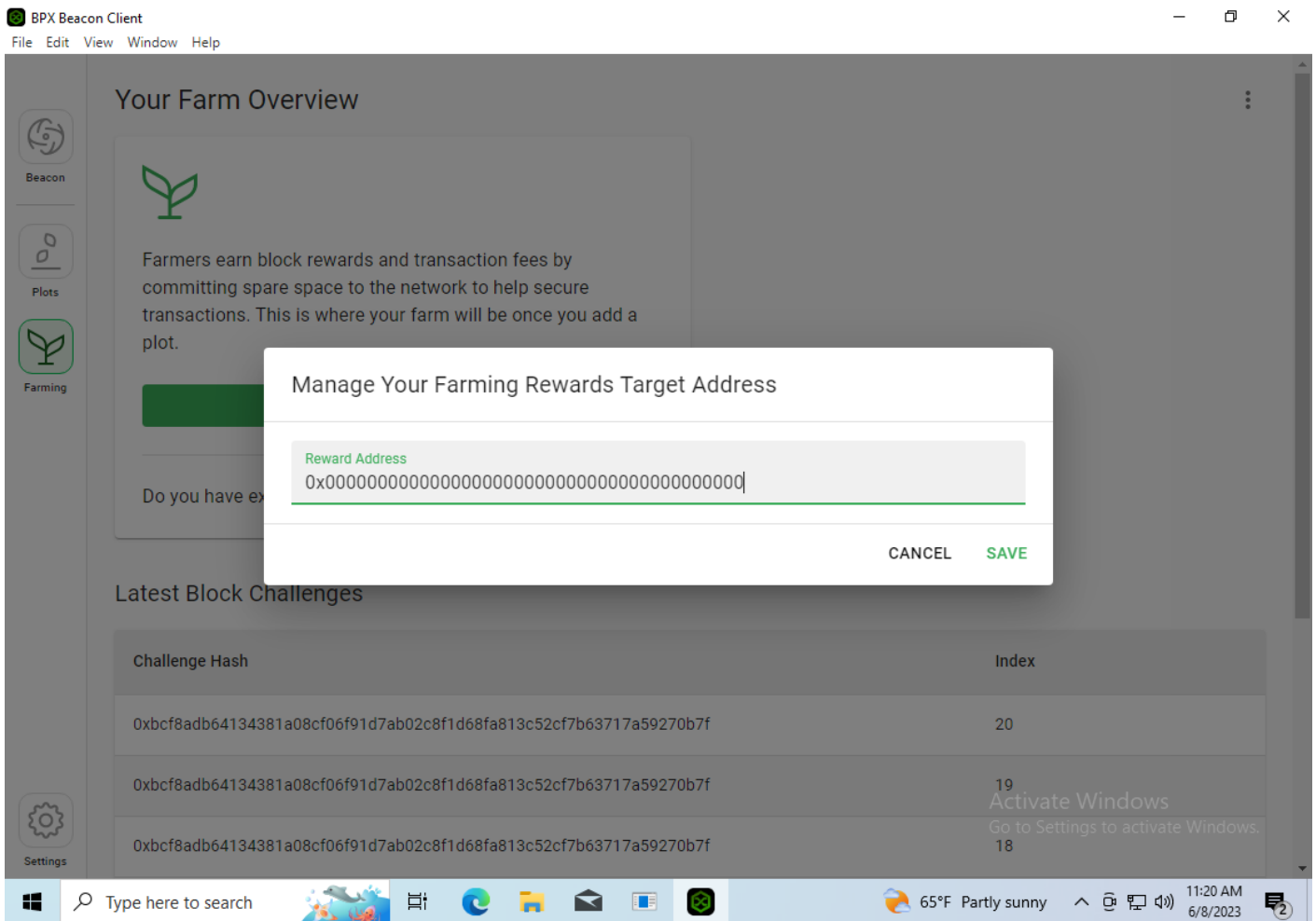
Activate Windows  
Go to Settings to activate Windows.



4. Go to the **Farming** tab. Expand the menu in the upper right corner and select "**Manage Farming Rewards**".



5. Delete the default zero address and paste your BPX wallet address where you want to receive block rewards, such as your MetaMask wallet address. Save the changes.



6. Go to the **Plots** tab. Expand the **ADD KEY** menu and select **Import Existing**.

BPX Beacon Client

File Edit View Window Help

Beacon

Plots

Farming

Settings

### Plotting Manager

+ ADD A PLOT

Total Harvesters

1

Total Plots

0

Total Plots Size

0.000 B

Plots With Missing Keys

0

Plots Failed To Open ?

0

Duplicate Plots

0

### Plot Keys

ADD KEY

Fingerprint	Label	Action
Create New		
Import Existing		

### Harvesters

Local 0x914d...64faa9  
127.0.0.1, 0.000 B

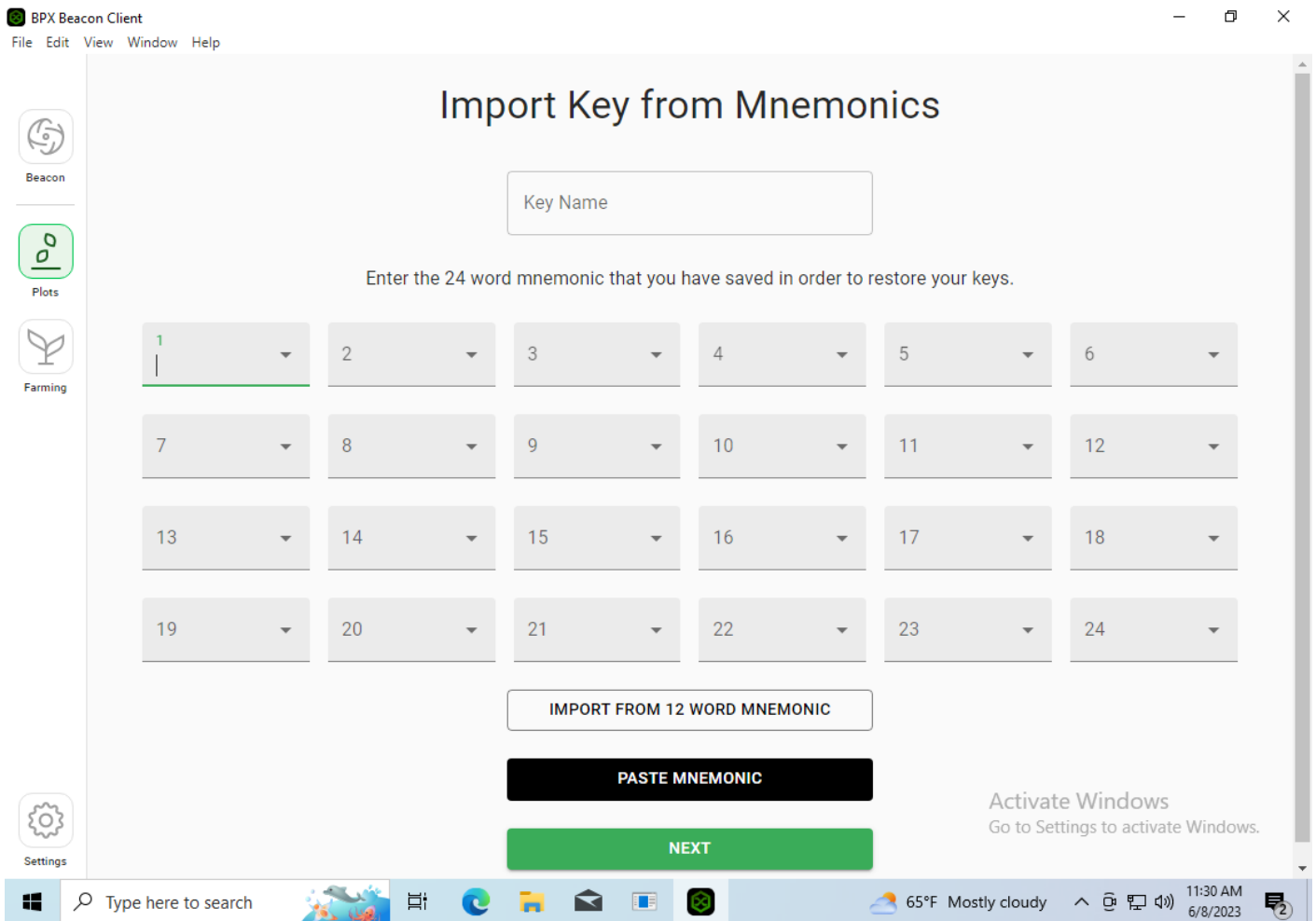
PLOTS 0

K-Size	Plot Key	Pool Key	Pool Contract Add...	Filename	Status	Action
No plots yet						

Activate Windows  
Go to Settings to activate Windows.

7. Enter the mnemonics that were used to create your plots and click **Next**.





8. Expand the menu in right top corner and select **Add Plot Directory**.

BPX Beacon Client

File Edit View Window Help

Beacon

Plots

Farming

### Plotting Manager

+ ADD A PLOT

+ Add Plot Directory

Refresh Plots

Total Harvesters  
1

Total Plots  
0

Total Plots Size  
0.000 B

Plots With Missing Keys  
0

Plots Failed To Open ?  
0

Duplicate Plots  
0

### Plot Keys

ADD KEY

Fingerprint	Label	Action
3325157473		

### Harvesters

Local 0x914d...64faa9  
127.0.0.1, 0.000 B

PLOTS 0

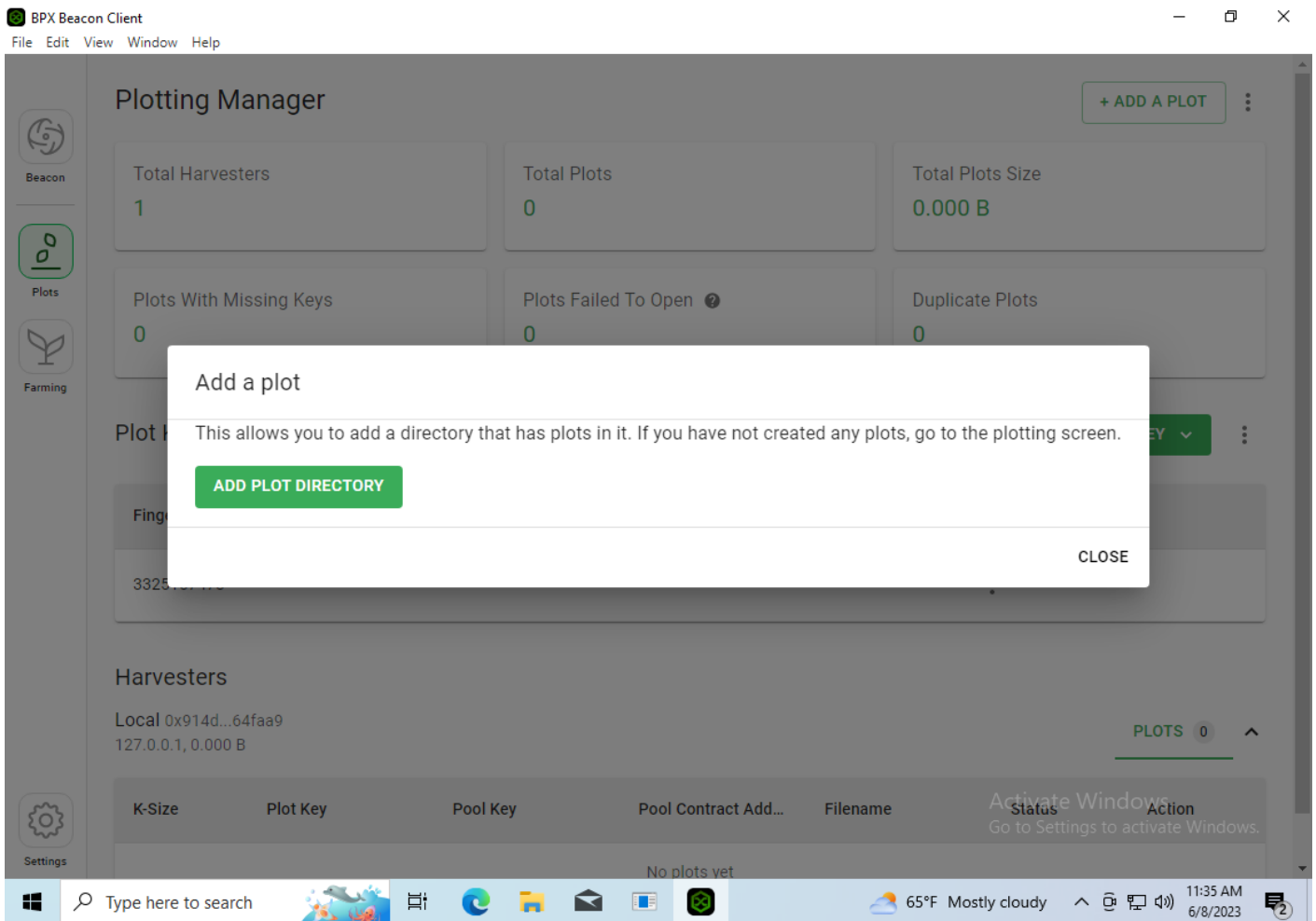
Settings

K-Size	Plot Key	Pool Key	Pool Contract Add...	Filename	Status	Action
No plots yet						

Activate Windows  
Go to Settings to activate Windows.

65°F Mostly cloudy 11:33 AM 6/8/2023

9. Use the "**Add Plot Directory**" button to add each folder containing your plots. Once all directories are added, click "**Close**".



10. Farming will begin immediately after adding the first plots directory. You can check whether your plots pass through the filter in the **Farming** tab.

# Farming BPX on Debian / Ubuntu

1. To start farming BPX, you need a fully synchronized full node. If you don't have one, [follow all the steps of this tutorial](#).

2. Log in as the BPX Chain services user, or switch to this account from the root console with the following command:

```
su - bpxchain
```

3. Set the wallet address where you want to receive block rewards. Replace `0xAAAA...` with for instance, your MetaMask address.

```
bpx rpc beacon set_coinbase '{"coinbase": "0xAAAAAAAAAAAAAAAAAAAAAAAAAAAAAAAAAAAAAA"}'
```

```
root@debian:~# su - bpxchain
bpxchain@debian:~$ bpx rpc beacon set_coinbase '{"coinbase": "0x4e21Fc7f8Ca298Be4af7C0a2D08dEE003F23230D"}'
{
  "success": true
}
bpxchain@debian:~$
```

4. Import the key that was used to create your plots. Run the following command and enter the 12 or 24 secret words. You can add an optional label for this key, or simply press **Enter** to skip.

```
bpx keys add
```

```
bpxchain@debian:~$ bpx keys add
Enter the mnemonic you want to use: easily manage flight dial enough crew erupt brush myth lawsuit lunch u
pset digital else innocent day lion battle hammer special make agree ignore poet
Enter the label you want to assign to this key (Press Enter to skip):
Added private key with public key fingerprint 694534655
bpxchain@debian:~$
```

5. Use the following command to add all folders with your plots. Replace `/mnt/hdd1` with the actual path.

```
bpx plots add -d /mnt/hdd1
```

```
bpxchain@debian:~$ bpx plots add -d /mnt/hdd1
Successfully added: /mnt/hdd1
bpxchain@debian:~$ bpx plots add -d /mnt/hdd2
Successfully added: /mnt/hdd2
bpxchain@debian:~$ bpx plots add -d /mnt/hdd3
Successfully added: /mnt/hdd3
bpxchain@debian:~$ bpx plots add -d /mnt/hdd4
Successfully added: /mnt/hdd4
bpxchain@debian:~$ bpx plots add -d /mnt/hdd5
Successfully added: /mnt/hdd5
bpxchain@debian:~$
```

6. Return to the **root** console. Modify the Beacon Client service configuration using any text editor, for example **nano**:

```
nano /etc/systemd/system/bpx-beacon.service
```

Replace the line:

```
ExecStart=bpx start beacon
```

With:

```
ExecStart=bpx start beacon farmer
```

Save the file by pressing **Control + O** and close the editor with **Control + X**.

```
GNU nano 7.2 /etc/systemd/system/bpx-beacon.service *
[Unit]
Description=BPX Beacon Client

[Service]
Type=forking
User=bpxchain
ExecStart=bpx start beacon farmer
ExecStop=bpx stop -d all
Restart=always

[Install]
WantedBy=multi-user.target

```

^G Help    ^O Write Out    ^W Where Is    ^K Cut    ^T Execute    ^C Location    M-U Undo  
^X Exit    ^R Read File    ^\ Replace    ^U Paste    ^J Justify    ^/ Go To Line    M-E Redo

7. Reload the system services configuration.

```
systemctl daemon-reload
```

8. Restart the Beacon Client with the farmer process enabled.

```
systemctl restart bpx-beacon
```

9. Your farmer is active and set to automatically start on system boot. Use the commands below to check the farming status.

```
su - bpxchain
bpx farm summary
```