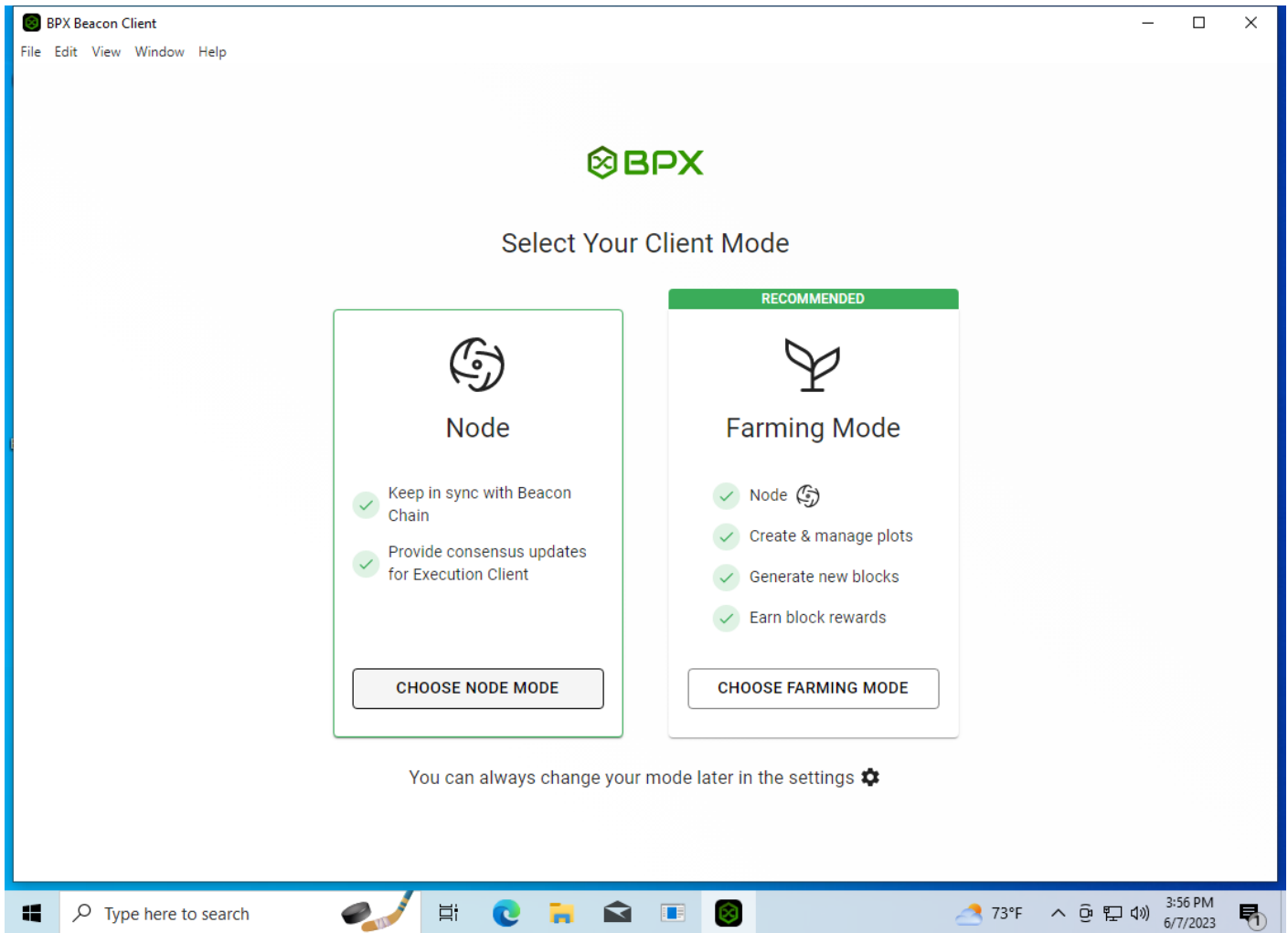


Farming BPX on Windows

1. To start farming you need a working and synchronized full node. If you don't already have it, [follow all the steps of this tutorial first](#), but in the step from screenshot below, choose **Farming Mode** instead. Then go to the Step 4.



2. If you already have running full node go to Settings and switch the working mode to Farming.



Beacon

Beacon Client

Status ?

Synced

Connection Status

Connected

Network Name

mainnet

Peak Height

77,927

Last Block Time ?

June 8, 2023 11:10 AM

Difficulty

18

VDF Sub Slot Iterations

27,262,976

Total Iterations ?

58,972,370,675

Estimated Network Space ?

131.374 PiB

Blocks

Search block by header hash



Header Hash	Height	Time Created	State
0x15b513d294a3eb75062cbf978bec7618b09f8cfdeb...		June 8, 2023 11:10 AM	Unfinished
0x6d1a38ba1260ac92b2e4969573ef29961b1e84f6cef...	77,927		Finished
0x9c499ce7cdb53b4cdd0b151faf852f75dfa73d9fe115...	77,926	June 8, 2023 11:10 AM	Finished

Activate Windows
Go to Settings to activate Windows.



Settings

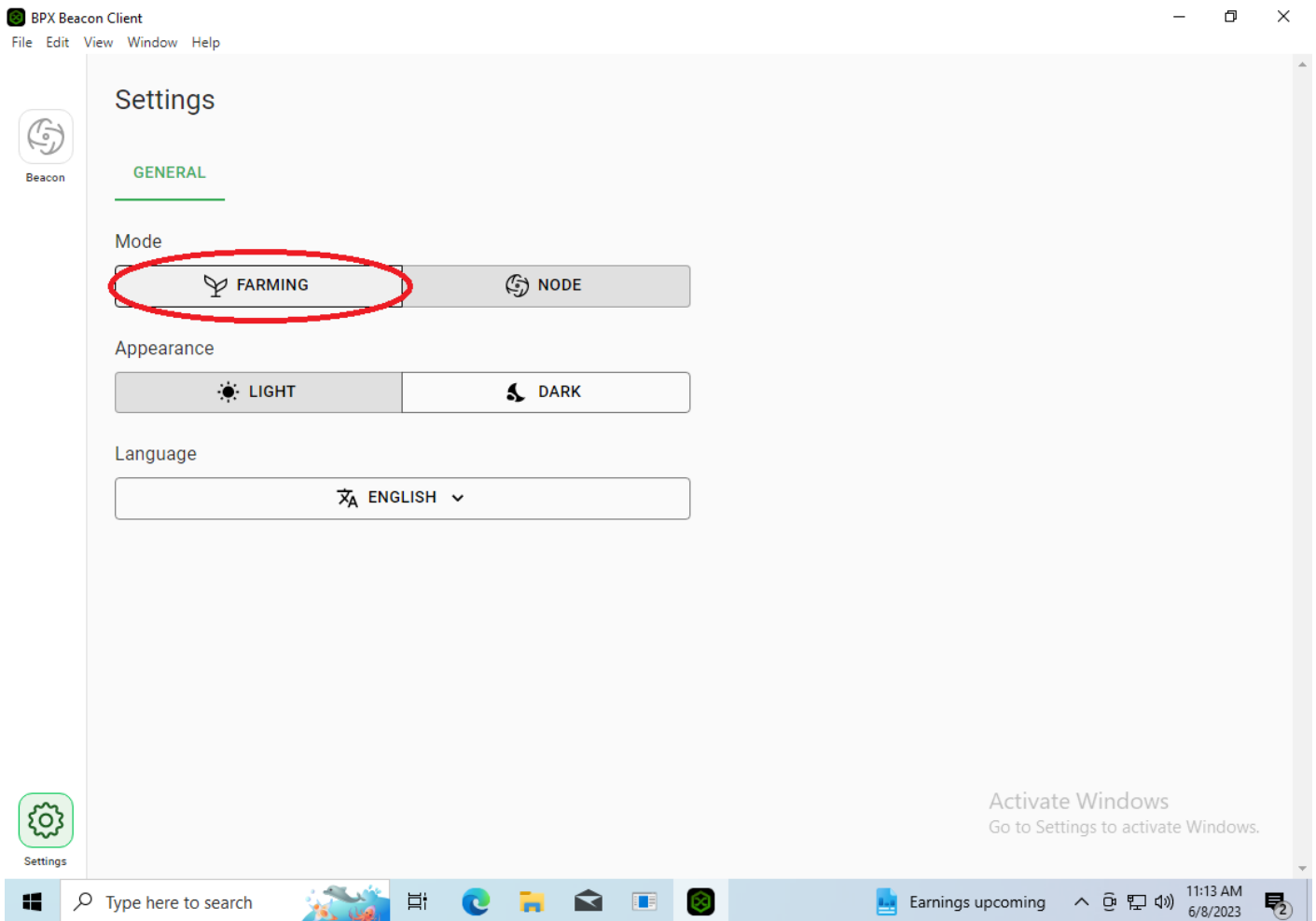


Type here to search



65°F Partly sunny

11:11 AM
6/8/2023



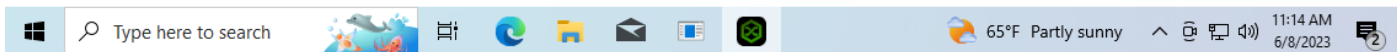
3. Wait for the additional processes needed for farming to start. You need to confirm opening the port on the Windows firewall, just like during the installation.



Starting services

Farmer
Harvester

Activate Windows
Go to Settings to activate Windows.



4. Go to the **Farming** tab. Expand the menu in upper right corner and select **Manage farming rewards**.

BPX Beacon Client


File Edit View Window Help

Beacon

Plots

Farming

Your Farm Overview



Farmers earn block rewards and transaction fees by committing spare space to the network to help secure transactions. This is where your farm will be once you add a plot.

[ADD A PLOT](#)

Do you have existing plots on this machine? [Add Plot Directory](#)

Latest Block Challenges

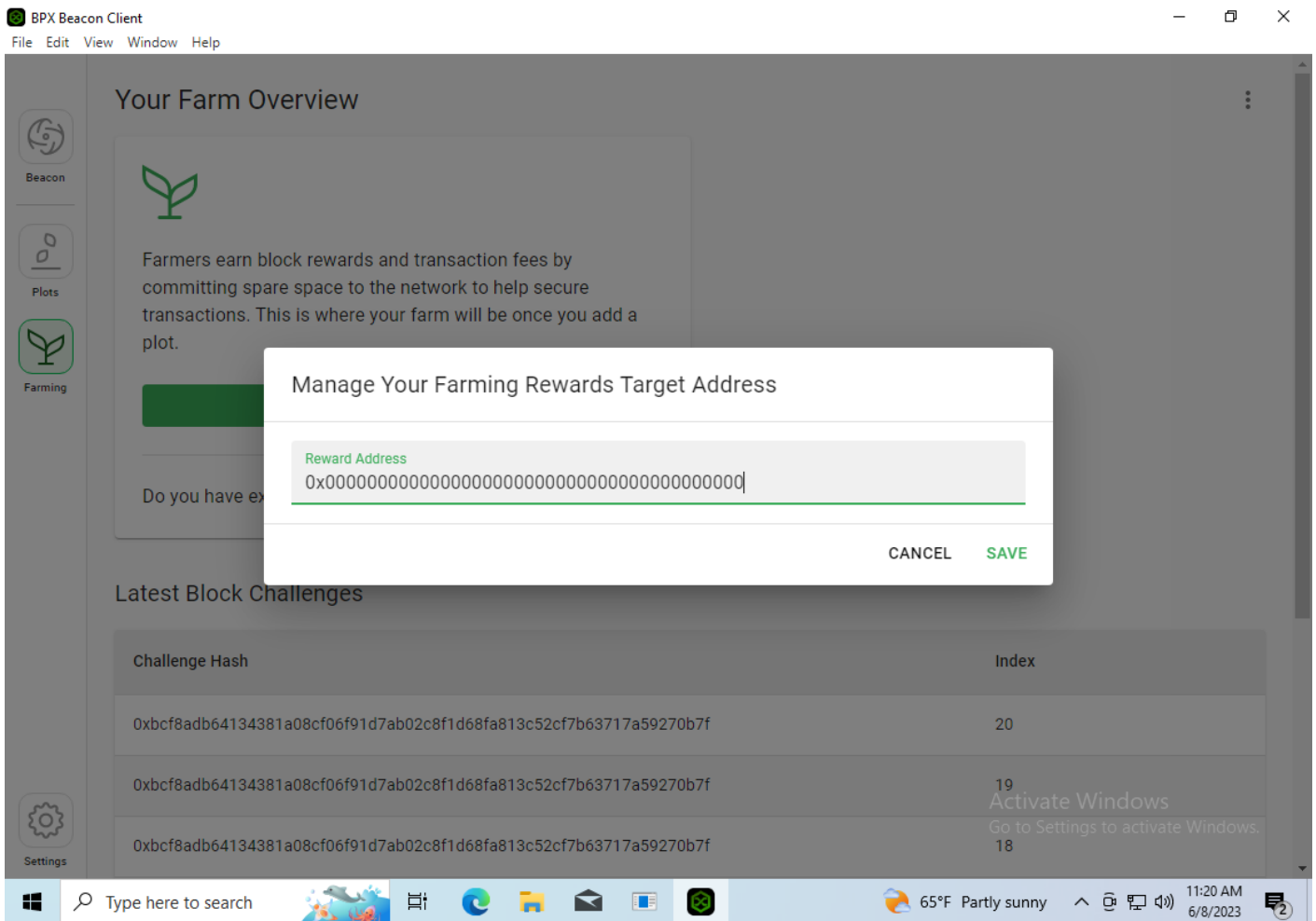
Challenge Hash	Index
0xbcf8adb64134381a08cf06f91d7ab02c8f1d68fa813c52cf7b63717a59270b7f	6
0x7f3ed3371ae73dbbe7a21777b5a1557f95e4d32996777362ed604c242d5e453b	46
0x7f3ed3371ae73dbbe7a21777b5a1557f95e4d32996777362ed604c242d5e453b	47

[Manage Farming Rewards](#)

Settings

65°F Partly sunny 11:18 AM 6/8/2023

5. Delete the default null address and paste there your BPX wallet address, e.g. Metamask. You will be receiving all farming rewards to this address. Click **Save**.



6. Go to the **Plots** tab. Expand the **ADD KEY** menu and select **Import Existing**.

BPX Beacon Client

File Edit View Window Help

Beacon

Plots

Farming

Settings

Plotting Manager

+ ADD A PLOT

Total Harvesters

1

Total Plots

0

Total Plots Size

0.000 B

Plots With Missing Keys

0

Plots Failed To Open ?

0

Duplicate Plots

0

Plot Keys

ADD KEY

Fingerprint	Label	Action
		Create New Import Existing

Harvesters

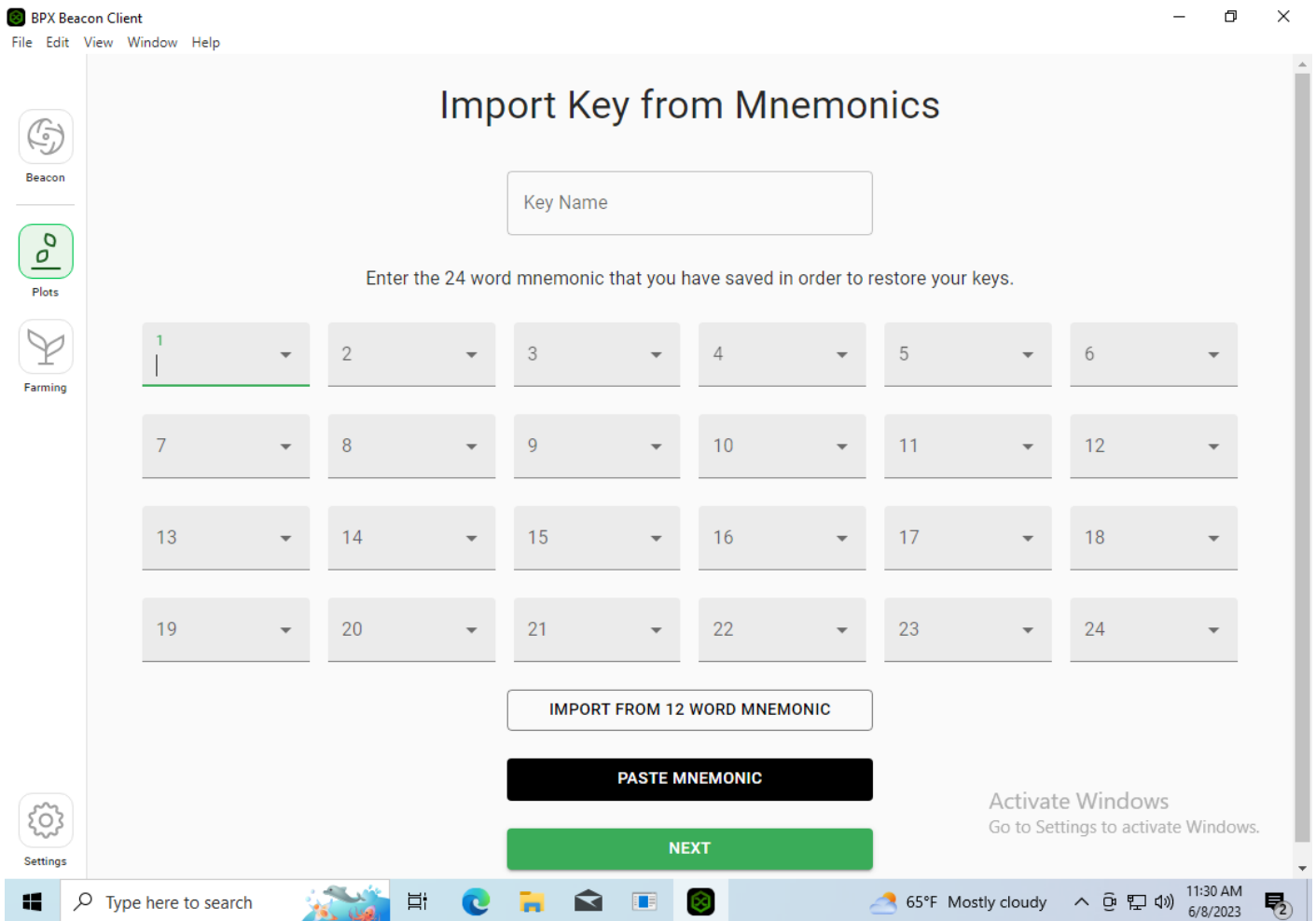
Local 0x914d...64faa9
127.0.0.1, 0.000 B

PLOTS 0

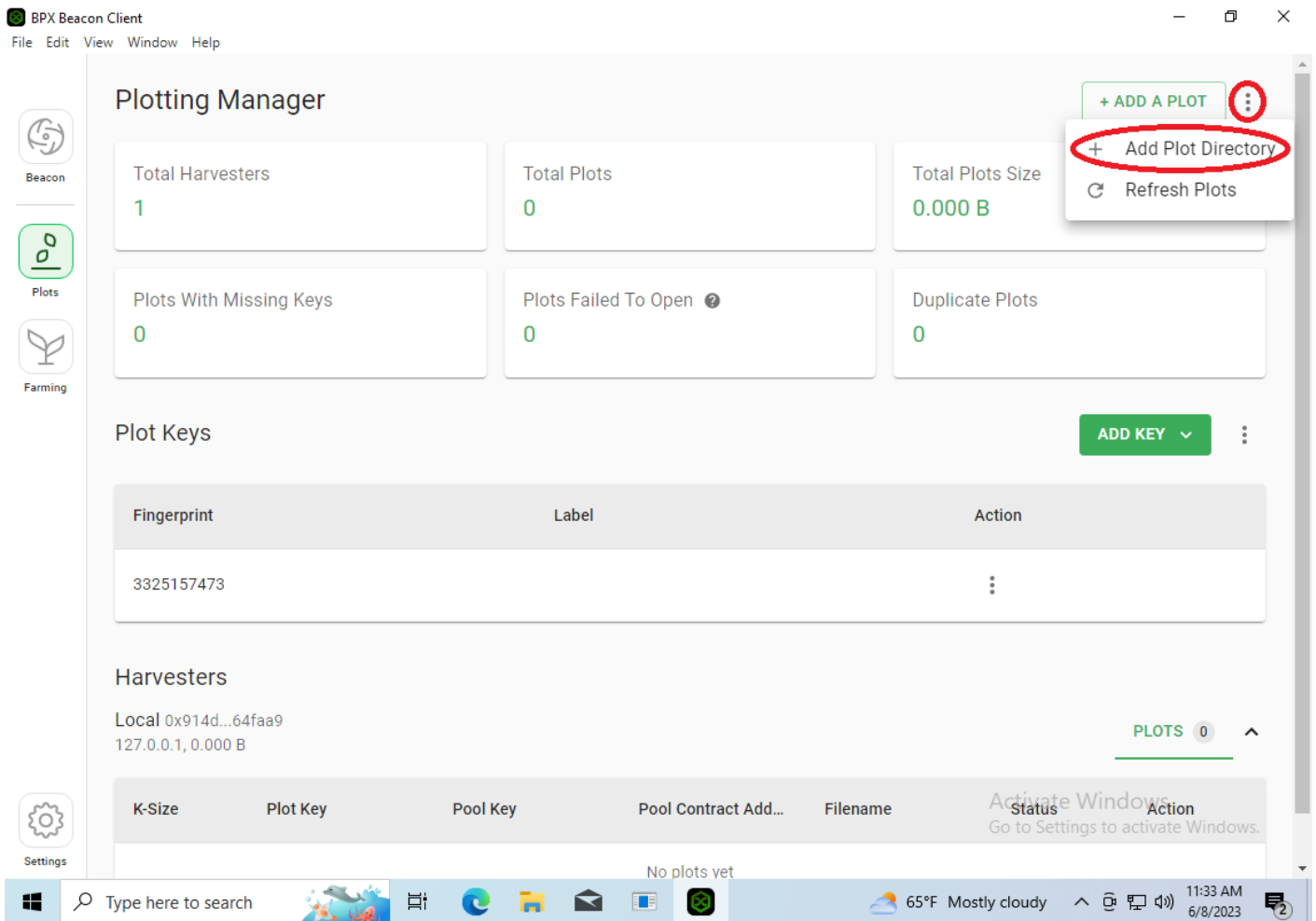
K-Size	Plot Key	Pool Key	Pool Contract Add...	Filename	Status	Action
No plots yet						

Activate Windows
Go to Settings to activate Windows.

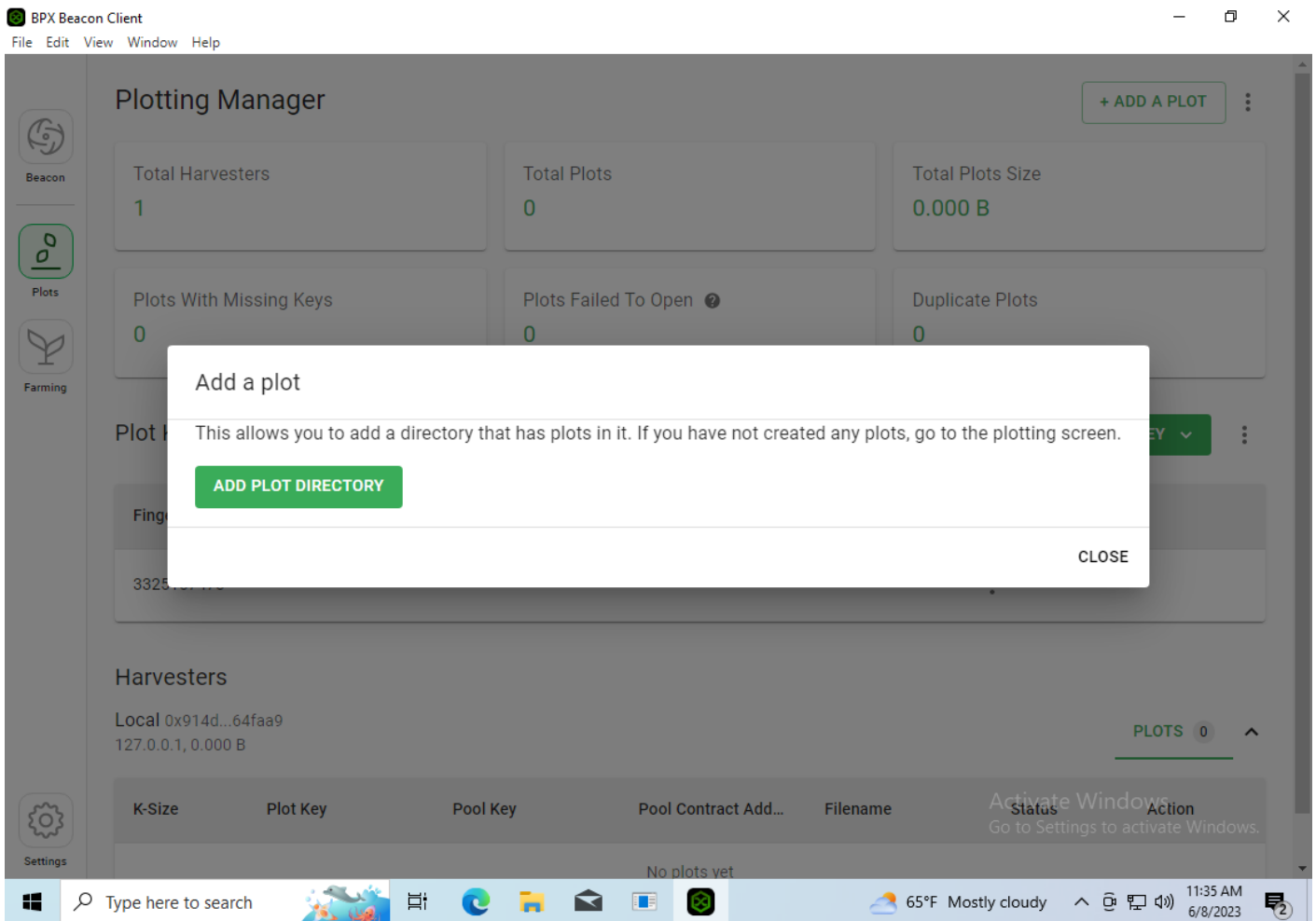
7. Enter the mnemonics that were used to create your plots and click **Next**.



8. Expand the menu in right top corner and select **Add Plot Directory**.



9. Use the **Add Plot Directory** button to add each folder where you have plots. When all directories are added, click **Close**.



10. Farming will start immediately after adding the first plots directory. You can check whether plots pass through the filter in the Farming tab. Sometimes it may be necessary to restart the BPX Beacon Client GUI for farming to start.

Revision #3

Created 8 June 2023 07:03:11 by Admin

Updated 9 June 2023 07:00:28 by Admin